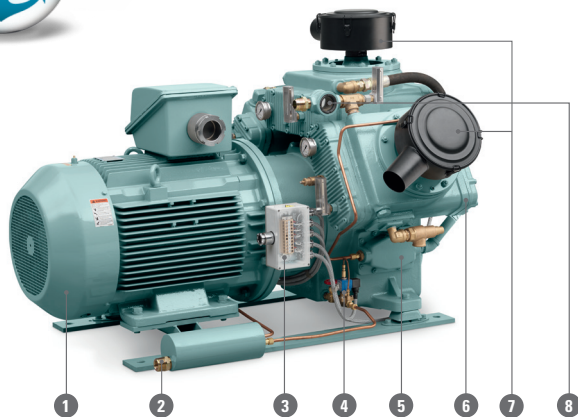
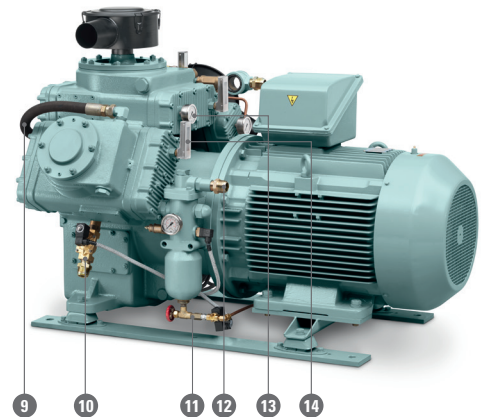


Marine Air Systems

LT KE water-cooled piston compressors for starting air (18.5-90 kW / 25-125 hp)



- 1 Marine e-motor with flex coupling
- 2 Sound muffler on drain collector for low noise levels
- 3 Junction box for easy installation
- 4 Auto drain valves on first and second stages as well as unloaded start
- 5 Internal crankcase ventilation chamber avoids oil fumes venting to ambient air
- 6 Water-cooled air coolers
- 7 Air inlet with replaceable filter element
- 8 Cooling water flow indicator



- 9 Standard cooling water hoses
- 10 Cooling water inlet solenoid valve to avoid condensation
- 11 Built-in oil-water separator
- 12 Air outlet with standard non-return valve
- 13 Glycerine-filled pressure gauges on every stage
- 14 Temperature gauges fitted where you need them, to give you full control and overview

Features and Benefits

Efficient and Reliable

- Forced air flow around crankcase reduces condensate to zero and extends bearing life
- Suitable for sea water and fresh water cooling at ambient temperatures up to 60°C
- Outstanding efficiency through the whole range

Low Cost of Ownership

- Limited number of parts
- Long maintenance intervals
- All components and service points are easily accessible
- Dismantling valves takes only a few minutes
- No electronic temperature and pressure sensors – all readable on compressor

Low Running Costs

- Highly durable components extend compressor lifetime
- Synthetic oil used as standard
- Low oil consumption: less than 0.2 g/kW/hr

Easy Installation

- Small footprint
- Supplied with baseplate and delivered as plug-and-play unit for quick installation
- No need for canopy

Quiet Operation

- Silencing intake guarantees low noise levels: max. 91 dB(A)
- V-type construction ensures low vibration: less than 14 mm/sec.
- Sound muffler on condensate drain as standard

Scope of Supply

- Certification
- Cooling water shut off solenoid valve
- Non-return valve
- Auto drain valves
- Oil-water separator
- e-motor IP55 including condensation heater
- Re-silent chocks
- Flanged connections
- Synthetic oil
- Approval drawings
- Spare parts & instruction manual

Options

- Starter box IP55, Y/D
- Cooling water pump
- Seawater cooling
- Pressure switches
- Spare parts kit

Technical Specifications

Compressor type	Capacity*	Bottle charging	Frequency	Power		Motor speed	Cooling water flow	Heat dissipation	Dimensions			Weight	
	m ³ /h	m ³ /h	Hz	kW	hp	rpm	l/min	kcal/h	L (mm)	W (mm)	H (mm)	kg	lbs
LT 25-30 KE	55	60	60	15	20	1170	17	8800	1228	794	785	570	1257
	69	75	50	18.5	25	1470	21	11050	1228	794	785	570	1257
	83	90	60	22	30	1770	25	13310	1228	794	785	570	1257
LT 30-30 KE	74	80	60	18.5	25	1170	22	11720	1296	794	785	570	1257
	92	100	50	22	30	1470	28	14730	1296	794	785	570	1257
	111	120	60	30	40	1770	33	17730	1296	794	785	570	1257
LT 35-30 KE	92	100	60	22	30	1170	22	11720	1296	794	785	890	1962
	115	125	50	30	40	1470	28	14730	1296	794	785	890	1962
	139	150	60	30	40	1770	33	17730	1296	794	785	890	1962
LT 40-30 KE	106	115	60	30	40	1170	31	16560	1364	1027	892	890	1962
	134	145	50	37	50	1470	39	20950	1364	1027	892	890	1962
	162	175	60	37	50	1770	47	25410	1364	1027	892	890	1962
LT 50-30 KE	134	145	60	30	40	1170	38	20500	1364	1041	899	890	1962
	166	180	50	37	50	1470	48	25940	1364	1041	899	890	1962
	204	220	60	45	60	1770	58	31460	1364	1041	899	890	1962
LT 60-30 KE	162	175	60	37	50	1170	45	24440	1386	1041	899	890	1962
	204	220	50	45	60	1470	57	30930	1386	1041	899	940	2072
	241	260	60	55	75	1770	69	37510	1386	1041	899	940	2072
LT 100-30 KE	268	290	60	55	75	1170	72	38780	1553	1190	1066	1380	3042
	333	360	50	75	100	1470	89	48390	1553	1190	1066	1380	3042
	398	430	60	90	125	1770	108	58660	1553	1190	1066	1380	3042
LT 125-30 KE	315	340	60	75	90	1170	84	45620	1591	1190	1066	1380	3042
	398	430	50	90	125	1470	106	57700	1591	1190	1066	1450	3197

* Free air delivery measured according to ISO 1217, Annex C, latest edition

Reference conditions:

- Absolute inlet pressure: 1 bar(a), 14.5 psig
- Intake air and coolant temperature: 20°C

